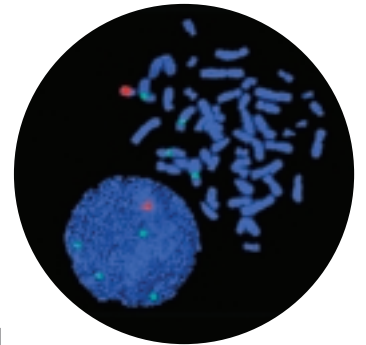




# Satellite probes

# Satellite Probes

Cytocell's Satellite probes are chromosome specific sequences generated from highly repeated human satellite DNA sequences located in the centromeric, pericentromeric or heterochromatic regions of each chromosome. These probes allow rapid identification and enumeration of human chromosomes in interphase and metaphase cells of postnatal samples. The probes generate strong fluorescent signals, which appear as spots where hybridised to the target DNA.



Cytocell offers a complete range of Satellite probes available in the Aquarius® liquid format. The probes are available independently and directly labelled in either a red, green or blue fluorophore (Texas Red, FITC or Coumarin (Aqua filter) spectra respectively).

The probes are produced in a concentrated form to allow the mixing, if required, of up to 3 other satellite probes in the same hybridisation.

The kits are supplied in an economical 5 test format and come complete with hybridisation solution and DAPI counterstain. The protocol is rapid and simple and follows a co-denaturation of the FISH probe and target DNA simultaneously.

## FEATURES

- Choice of label: red, green or for some chromosomes, blue
- Aquarius® liquid probe format, capable of mixing up to 3 other satellite probes
- Simple and clean: co-denaturation protocol
- Visible using single bandpass Texas Red or FITC filters or standard DAPI/FITC/Texas Red triple filter
- 5 assay kit format which includes hybridisation solution, DAPI counterstain and full instructions for use

# Aquarius® Satellite Probe Range Summary

Chromosome	Locus	Chromosome Region	DNA Class	No. Tests	Cat.No.*
1	D1Z1	1q12	satellite III	5	LPE 001G/R
2	D2Z2	2p11.1-q11.1	α-satellite	5	LPE 002G/R
3	D3Z1	3p11.1-q11.1	α-satellite	5	LPE 003G/R
4	D4Z1	4p11.1-q11.1	α-satellite	5	LPE 004G/R
1/5/19	D1Z7	1p11.1-q11.1	α-satellite	5	LPE 005G/R
	D5Z2	5p11.1-q11.1			
	D19Z3	19p11.1-q11.1			
6	D6Z1	6p11.1-q11.1	α-satellite	5	LPE 006G/R/BL
7	D7Z1	7p11.1-q11.1	α-satellite	5	LPE 007G/R/BL
8	D8Z2	8p11.1-q11.1	α-satellite	5	LPE 008G/R
9	D9Z3	9q12	satellite III	5	LPE 009G/R
10	D10Z1	10p11.1-q11.1	α-satellite	5	LPE 010G/R/BL
11	D11Z1	11p11.1-q11.1	α-satellite	5	LPE 011G/R/BL
12	D12Z3	12p11.1-q11.1	α-satellite	5	LPE 012G/R
13/21	D13Z1	13p11.1-q11.1	α-satellite	5	LPE 013G/R
	D21Z1	21p11.1-q11.1			
14/22	D14Z1	14p11.1-q11.1	α-satellite	5	LPE 014G/R
	D22Z1	22p11.1-q11.1			
15	D15Z4	15p11.1-q11.1	α-satellite	5	LPE 015G/R/BL
16	D16Z2	16p11.1-q11.1	α-satellite	5	LPE 016G/R
17	D17Z1	17p11.1-q11.1	α-satellite	5	LPE 017G/R/BL
18	D18Z1	18p11.1-q11.1	α-satellite	5	LPE 018G/R/BL
20	D20Z1	20p11.1-q11.1	α-satellite	5	LPE 020G/R
X	DXZ1	Xp11.1-q11.1	α-satellite	5	LPE 00XG/R/BL
Yc	DYZ3	Yp11.1-q11.1	α-satellite	5	LPE 00YcG/R/BL
Yq	DYZ1	Yq12	satellite III	5	LPE 00YqG/R
XYc Dual Labelled	DXZ1	Xp11.1-q11.1	α-satellite	10	LPE 00XYc
	DYZ3	Yp11.1-q11.1			
XYq Dual Labelled	DXZ1	Yp11.1-q11.1	α-satellite	10	LPE 00XYq
	DYZ1	Yq12	satellite III		

\* G specifies a green label, R specifies a red label and BL specifies a blue label.

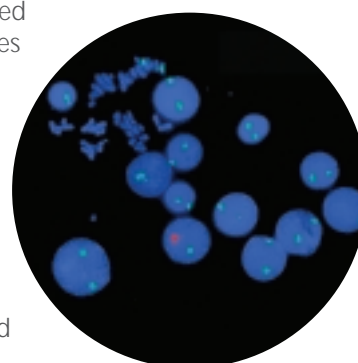
Cytocell's products should be used in accordance with the Instructions For Use.

## Dual Labelled Satellite Probe Sets

We also offer two dual labelled X&Y probe sets, available as Aquarius directly labelled probes in a 10 test format. They may be used to identify X & Y human chromosomes in interphase cells and metaphases chromosomes.

- XYc: Xp11.1-q11.1 directly labelled with a green fluorophore (FITC spectrum) and Yp11.1-q11.1 with a red fluorophore (Texas Red spectrum).
- XYq: Xp11.1-q11.1 directly labelled with a green fluorophore (FITC spectrum) and Yq12 with a red fluorophore (Texas Red spectrum).

The probes are designed for fluorescence *in situ* hybridisation of interphase cells and metaphase chromosomes from cultured peripheral blood cells.



## Related Products

### Chromoprobe Multiprobe®-I System

The Chromoprobe Multiprobe-I System allows the simultaneous analysis of all chromosome specific satellite sequences on one slide in one single hybridisation. It combines a Multiprobe glass device of 24 squares with a complete set of alpha and classical satellite probes. Each square of the Multiprobe carries a satellite probe for one of the 24 chromosomes. The probes are directly labelled in a red fluorophore (Texas Red spectrum).

For catalogue numbers and more information on this product, please refer to our brochure, "Chromoprobe Multiprobe®-I System" or visit our website [www.cytocell.com](http://www.cytocell.com)

## Ordering Information

For more information on Cytocell's products or to place an order, please contact your authorised local distributor.

For distributor details, visit [www.cytocell.com](http://www.cytocell.com)



**Cytocell Technologies Ltd.**  
6-7 Technopark  
Newmarket Road  
Cambridge CB5 8PB  
United Kingdom  
T: +44 (0) 1223 467064  
F: +44 (0) 1223 360732  
E: [probes@cytocell.com](mailto:probes@cytocell.com)  
W: [www.cytocell.com](http://www.cytocell.com)

© Copyright 2004, Cytocell Technologies Ltd

001/Mar 2004 MC#0007