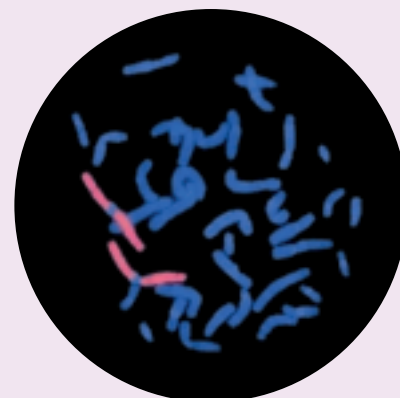


# Whole Chromosome Painting Probes

Cytocell's Whole Chromosome Painting Probes consist of libraries of DNA sequences derived from flow-sorted chromosomes. These libraries contain sequences stretching over the entire length of the chromosome and provide superior coverage of each human chromosome.

Applications include analysis of chromosome partners involved in translocations; in identification of the chromosome of origin of marker chromosomes; confirmation of results obtained from M-FISH and SKY testing and may be of particular interest to those studying mutagenesis of human chromosomes as a result of exposure to genotoxic agents.

Cytocell offers a comprehensive range of Whole Chromosome Painting probes available in the Aquarius® liquid format. The probes are available directly labelled in either a red or a green fluorophore (Texas Red or FITC spectra respectively). They are ready to use in hybridisation solution. The kits are supplied in an economical 5 test format and come complete with DAPI counterstain. The protocol is rapid and simple and follows a co-denaturation of the FISH probe and target DNA simultaneously.



## FEATURES

- Directly labelled whole chromosome painting probes
- Choice of label: red or green
- Aquarius® liquid probe format
- Ready to use: pre-mixed in hybridisation solution
- Simple and clean: co-denaturation protocol
- Visible using single bandpass Texas Red or FITC filters or standard triple DAPI/FITC/Texas Red filter
- 5 assay kit format which includes DAPI counterstain and full instructions for use

The probes are designed for use in fluorescence *in situ* hybridisation analysis of human metaphase chromosomes from cultured peripheral blood cells.

# Aquarius® Whole Chromosome Painting Probe Range Summary

| Chromosome | Cat.No.* | No.Tests | Chromosome | Cat.No.* | No.Tests | Chromosome | Cat.No.* | No.Tests |
|------------|----------|----------|------------|----------|----------|------------|----------|----------|
| 1          | LPP01R/G | 5        | 9          | LPP09R/G | 5        | 17         | LPP17R/G | 5        |
| 2          | LPP02R/G | 5        | 10         | LPP10R/G | 5        | 18         | LPP18R/G | 5        |
| 3          | LPP03R/G | 5        | 11         | LPP11R/G | 5        | 19         | LPP19R/G | 5        |
| 4          | LPP04R/G | 5        | 12         | LPP12R/G | 5        | 20         | LPP20R/G | 5        |
| 5          | LPP05R/G | 5        | 13         | LPP13R/G | 5        | 21         | LPP21R/G | 5        |
| 6          | LPP06R/G | 5        | 14         | LPP14R/G | 5        | 22         | LPP22R/G | 5        |
| 7          | LPP07R/G | 5        | 15         | LPP15R/G | 5        | X          | LPP0XR/G | 5        |
| 8          | LPP08R/G | 5        | 16         | LPP16R/G | 5        | Y          | LPP0YR/G | 5        |

\* R specifies a red label, G specifies a green label

Cytocell's products should be used in accordance with the Instructions For Use.

## Related Products

### Chromoprobe Multiprobe®-System OctoChrome

Chromoprobe Multiprobe-System OctoChrome allows the simultaneous analysis of the whole genome on one slide in one hybridisation. It combines a Multiprobe glass device of 8 squares with whole chromosome libraries. Each square of the Multiprobe carries paint probes for three different chromosomes in three different colour fluorophores.

For catalogue numbers and more information on this product, please refer to our brochure, "Chromoprobe Multiprobe®-System OctoChrome" or visit our website [www.cytocell.com](http://www.cytocell.com)

## Ordering Information

For more information on Cytocell's products or to place an order, please contact your authorised local distributor. For distributor details, visit [www.cytocell.com](http://www.cytocell.com)



**Cytocell Technologies Ltd.**  
6-7 Technopark  
Newmarket Road  
Cambridge CB5 8PB  
United Kingdom  
T: +44 (0) 1223 467064  
F: +44 (0) 1223 360732  
E: [probes@cytocell.com](mailto:probes@cytocell.com)  
W: [www.cytocell.com](http://www.cytocell.com)